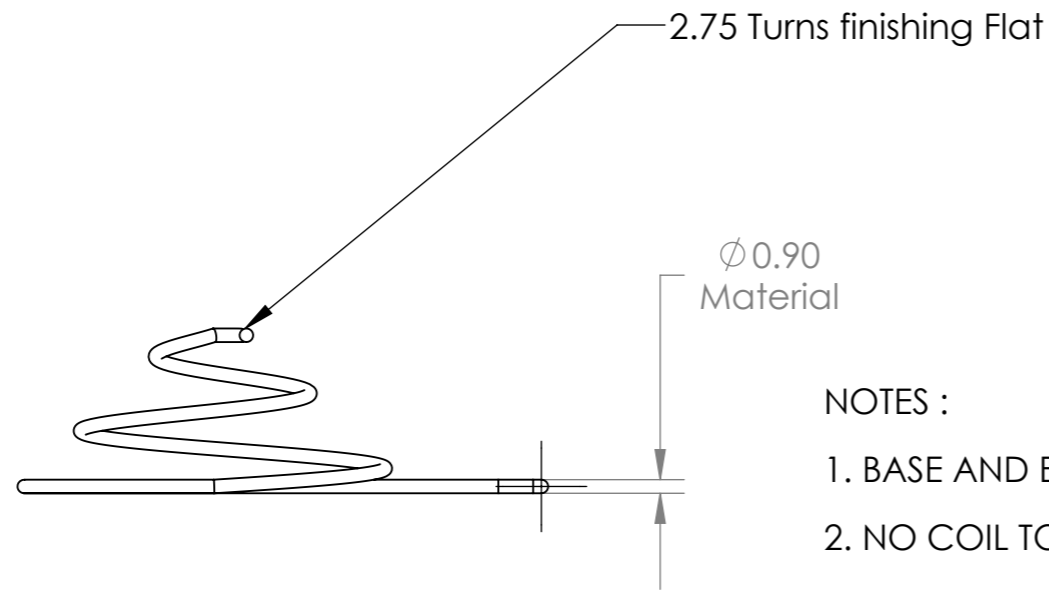


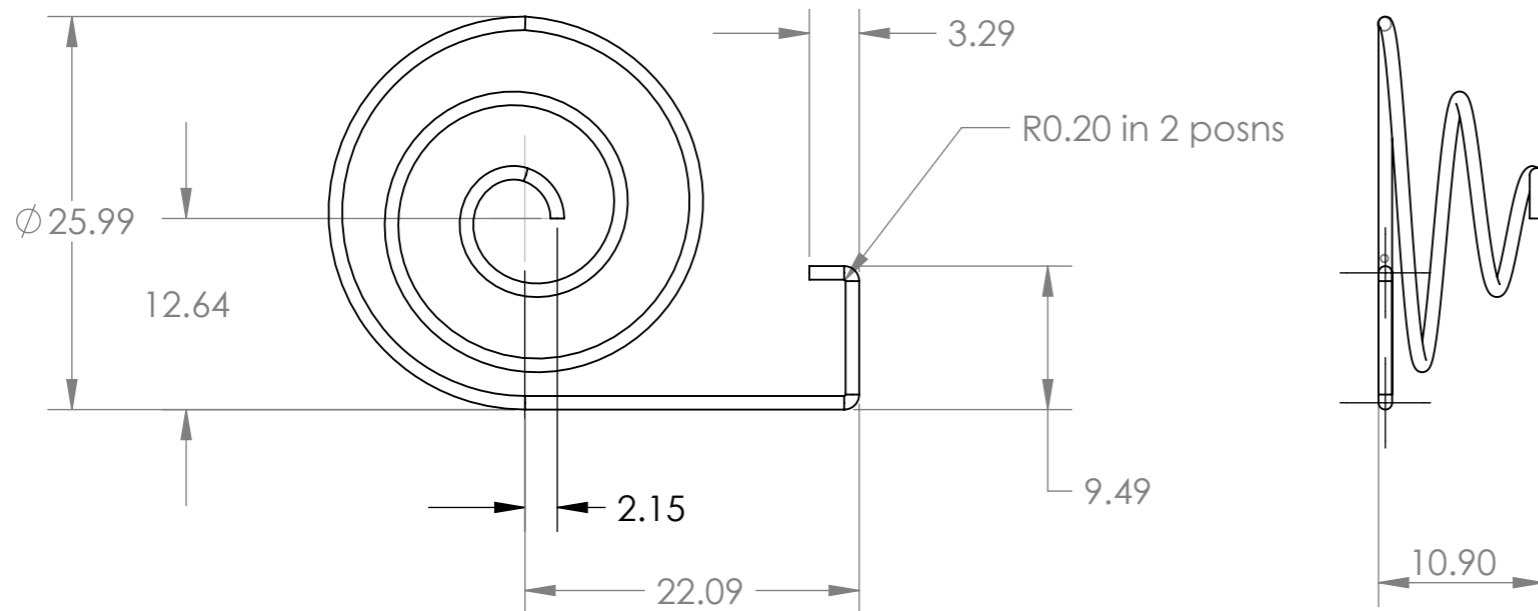
SHEET 1 OF 1
DRG No. 1761-8144

DO NOT SCALE DRAWING



NOTES :

1. BASE AND END OF SPRING TO BE FLAT
2. NO COIL TO FOUL ON INSIDE OF PREVIOUS COIL
3. PARTS TO BE SUPPLIED IN VACUUM FORMED 50 CAVITY WAFFLE TRAY
4. Hydrogen embrittlement relief to be carried out after plating
5. THIS DRAWING IS FOR REFERENCE ONLY AND PART IS TO BE MANUFACTURED USING CAD DATA SUPPLIED



ISSUE	AMENDMENT	DATE
A	INTRODUCED	22.11.06
1	Prod Issue	30.11.07
2	CN 11555	12.12.08
Uncontrolled When Printed		



**This Part Must be Supplied
RoHS Compliant**

TOLERANCES UNLESS STATED OTHERWISE
 ± 0.4 TO 1 DEC. PLACE
 ± 0.2 TO 2 DEC. PLACES ANGLES ± 2°
 ± 0.1 TO 3 DEC. PLACES
 HOLES ±0.05 UP TO 5 ±1% ABOVE
 CONCENTRICITY TO WITHIN 0.1 DIA.
 ALL THREADS TO BS3643 PT2 1981 CLASS 6H - 6g

MATERIAL
 0,9mm thick Spring Steel wire
 to BS5216 grade M4

FINISH
 8-10 microns Electroless Nickel
 (6-12% Phosphorus) and 0,05-0,15
 microns Gold (99.8% pure)

DIMENSIONS IN mm

SCALE :2:1

THIRD ANGLE PROJECTION

	NAME	DATE
DRAWN	P.McMullan	22.11.06
CHECKED	B.Merchant	22.11.06
APPROVED	P.McMullan	22.11.06
APPROVED	Tony Hunt	22.11.06

WEIGHT: