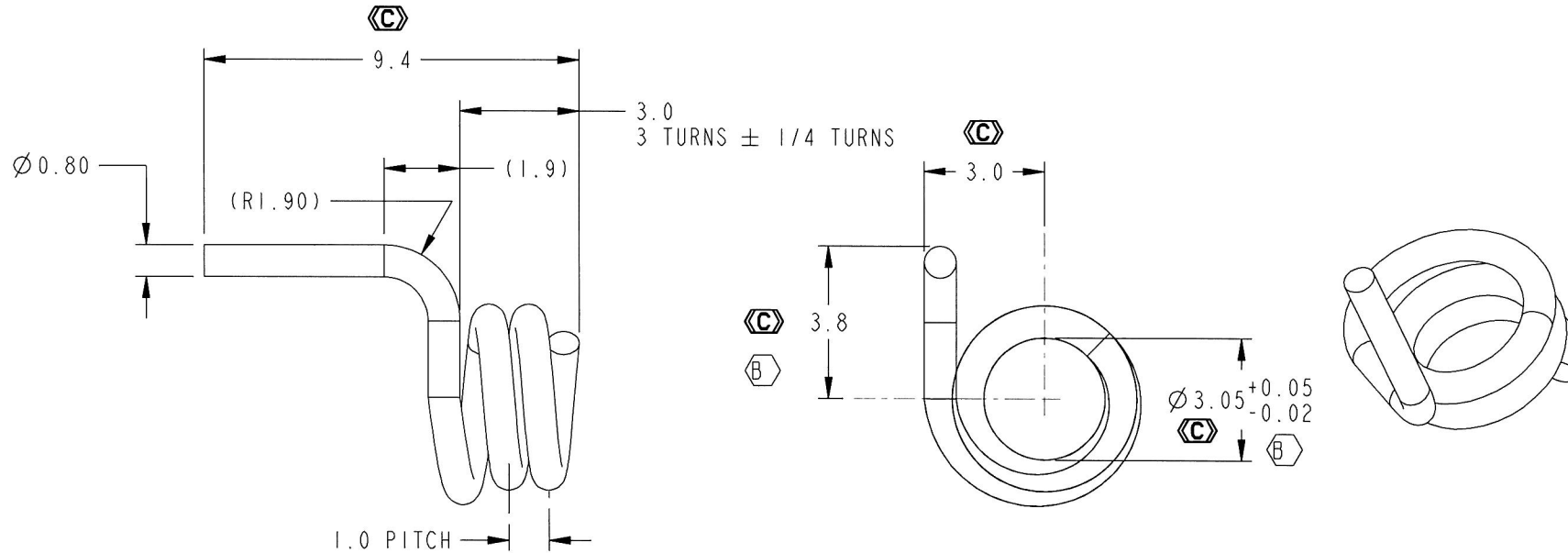


FOR REFERENCE ONLY IF PRINTED	DRAWING STATUS:
CAD DATABASE FILENAME: 40-50094	

REV.	DESCRIPTION.	DATE.	ECO NO.	BY.
B	CHANGE DIM FROM 4.9 TO 3.8 & FROM 3.05 +0.03/-0.02 TO 3.05 +0.05/-0.02	2 JUN 2010	ECN-100044	KUA



NOTES:

- MATERIAL : $\varnothing 0.8\text{mm}$ MUSIC WIRE
- PLATING: COPPER CLAD
THICKNESS: 6 TO 10 MICRON (C)
- ALL DIMENSIONS ARE IN MILLIMETERS
- CAD CONTROLLED GEOMETRY
- MAX BURR 0.05MM. NO LOOSE BURRS PERMITTED
- PARTS SHALL BE FREE OF LOOSE BURRS, OILS AND DEBRIS.
- NO CHANGE IN MATERIAL AND SHEET THICKNESS IS ALLOWED WITHOUT PRIOR WRITTEN APPROVAL BY AMPHENOL T&M ANTENNAS
- DO NOT SCALE DRAWING.
- PARTS SHALL BE PACKAGED IN A MANNER TO PREVENT BOWING, SCRATCHING OR DAMAGE DURING SHIPMENT (FOR EXAMPLE USE TRAY).
- DIMENSIONS TO THEORETICAL INTERSECTION (TTI).
- ALL MATERIALS, PLATING AND PROCESSES USED TO FABRICATE THE COMPONENT SPECIFIED ON THIS DOCUMENT MUST COMPLY WITH THE RoHS DIRECTIVE 2002/95EC AND GP SS-00259 REQUIREMENTS.

PROJECT DATABASE LOCATION:

ITEM NO.	QTY.	PART NUMBER	DESCRIPTION	MATERIAL	
<p>TOLERANCES (UNLESS SPECIFIED): X.X ±0.1 X.XX ±0.05 ANGLES ±1° CONCENTRICITY ±0.05 PERPENDICULARITY ±0.05 FLATNESS ±0.05</p> <p>BREAK ALL CORNERS R0.25 MAX</p> <p>(C) INDICATES CRITICAL DIMENSION</p> <p>(ST) INDICATES SPC REQUIRED Cpk < 1.5 REQUIRES CORRECTIVE ACTION</p> <p>DIMENSIONING AND TOLERANCING PER ASME Y14.5M-1994</p>					
<p>AMPHENOL ATMM PROPRIETY - THE DRAWING ON THIS PRINT AND INFORMATION THEREWITH ARE PROPRIETARY TO ATMM, AND SHALL NOT BE DISCUSSED IN WHOLE OR IN PART WITHOUT ATMM'S CONSENT.</p>					
			METRIC UNITS = mm	MATERIAL: MUSIC WIRE	
			DRAWN: ZUL	<p>PLOT 1A, BAYAN LEPAS FREE INDUSTRIAL ZONE 1, 11900 PENANG, MALAYSIA. PHONE 604-644 8628. FAX 604-644 9628</p>	
			CHECKED: EL KUA		FINISH: SEE NOTES
			APPROVED: CS POR		
<p>SIDE SPRING, PHOENIX</p>				<p>A4 SIZE</p>	
SCALE: 6.000		REV. B	PART NUMBER: 40-50094	PAGE: 1 OF 1	