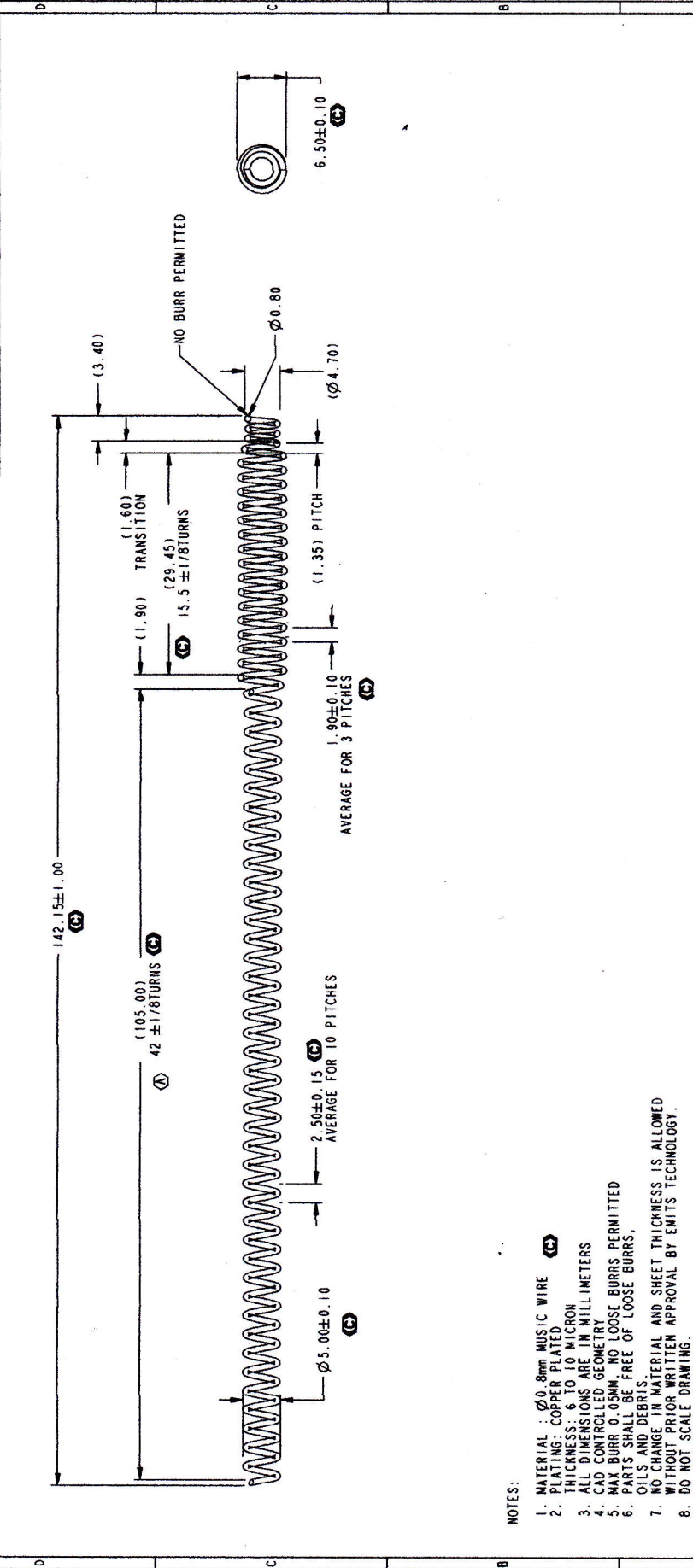


FOR REFERENCE ONLY IF PRINTED		DRAWING STATUS: DEVELOPMENT	
CAD DATABASE FILENAME:			
REV	DESCRIPTION	DATE	BY
A	Released for Production.	21-Sep-18	KY Ho



UNLESS OTHERWISE SPECIFIED TOLERANCES:		EMITS PROPRIETARY - THE DRAWING ON THIS PRINT AND INFORMATION THEREWITH ARE PROPRIETARY TO EMITS, AND SHALL NOT BE DISCLOSED IN WHOLE OR IN PART WITHOUT EMITS CONSENT.	
±0.1	±0.05	MATERIAL:	emits Technology Sdn. Bhd.
±0.05	±0.02	UNITS = mm	
±0.02	±0.01	SEE NOTES	No. 2, Lorong Bahau, Tan Jambak Bahau, Mak Mandi 13400 Bekoh, Penang, Malaysia. TITLE: V/F BAND 3 SPRING, NEO
±0.01	±0.005	FINISH:	SCALE: 2:000
±0.005	±0.002	SEE NOTES	REV. A
±0.002	±0.001	QUALITY	DRWG NUMBER: 40-50045
±0.001	±0.0005	TOOLING	PAGE: 1 OF 1
±0.0005	±0.0002	SIZE	

NOTES:

- MATERIAL: ϕ 0.8mm MUSIC WIRE
- PLATING: COPPER PLATED
- THICKNESS: 6 TO 10 MICRON
- ALL DIMENSIONS ARE IN MILLIMETERS
- CAD CONTROLLED GEOMETRY
- MAX BURR 0.05MM, NO LOOSE BURRS PERMITTED
- PARTS SHALL BE FREE OF LOOSE BURRS, OILS AND DEBRIS.
- NO CHANGE IN MATERIAL AND SHEET THICKNESS IS ALLOWED
- WITHOUT PRIOR WRITTEN APPROVAL BY EMITS TECHNOLOGY.
- DO NOT SCALE DRAWING
- PARTS SHALL BE PACKAGED IN A MANNER TO PREVENT BOWING
- SCRATCHING OR DAMAGE DURING SHIPMENT (FOR EXAMPLE USE TRAY).
- DIMENSIONS TO THEORETICAL INTERSECTION (T.I.)
- ALL MATERIALS, PLATING AND PROCESSES USED TO FABRICATE THE COMPONENT SPECIFIED ON THIS DOCUMENT MUST COMPLY WITH THE ROHS DIRECTIVE 2002/95EC AND GP SS-00259 REQUIREMENTS.

NEO	40-50045	NEXT ASSEMBLY	USED ON
PROJECT CODE	PART NUMBER		