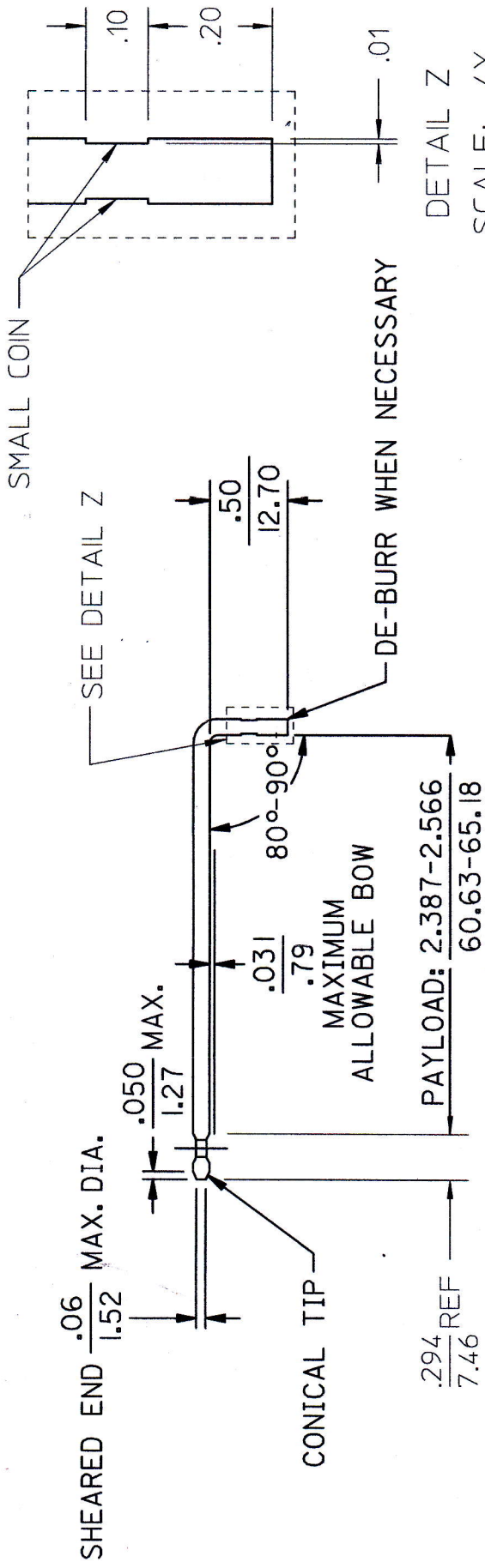
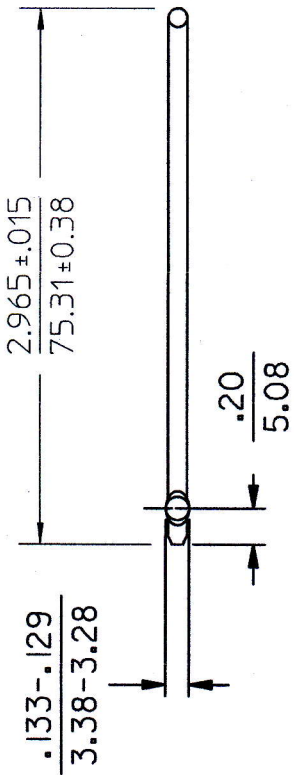


NOTES:

1. PINS ARE TO BE CLEAN OF ANY MACHINE LUBRICANTS AND METAL DEBRIS WHEN SUPPLIED.
2. MATERIAL:  $\phi.105/(2.67)$  BASIC PRE-GALVANIZED 1008 STEEL WIRE PER ASTM SPEC A641.



DETAIL Z  
SCALE: 4X  
REFERENCE ONLY

QUALITY SYMBOLS	GENERAL TOLERANCES (UNLESS SPECIFIED)	DIMENSION STYLE	SCALE	DESIGN UNITS	THIRD ANGLE PROJECTION	TITLE	
						PACKAGING PIN FOR THE PRIMARY 1/4&1/2 TUBE BOX 2 PINS REQ'S PER TUBE	
$\nabla = 0$	4 PLACES $\pm$ ---	IN/MM	INCH	INCH		MOLEX INCORPORATED	
$\nabla = 0$	3 PLACES $\pm$ ---	DRAWN BY	1999/10/27	1999/10/27	1999/10/27	DOCUMENT NO.	70180-0182
$\nabla = 0$	2 PLACES $\pm 0.13$	CHECKED BY	1999/10/27	1999/10/27	1999/10/27	MATERIAL NO.	70180-0182
$\nabla = 0$	1 PLACE $\pm 0.25$	APPROVED BY	1999/10/27	1999/10/27	1999/10/27	SIZE	A
ANGULAR $\pm 1/2^\circ$		DRAFT WHERE APPLICABLE MUST REMAIN WITHIN DIMENSIONS		SHEET NO.		1 OF 1	
FC NO: UCP2010-1403		CHG TO ROHS MATL		APP:SMILLER		2010/01/21	
DRWN:DMORGAN		2010/01/18		CHKD:BBARKER		2010/01/21	
REV		DESCRIPTION		APP:SMILLER		2010/01/21	