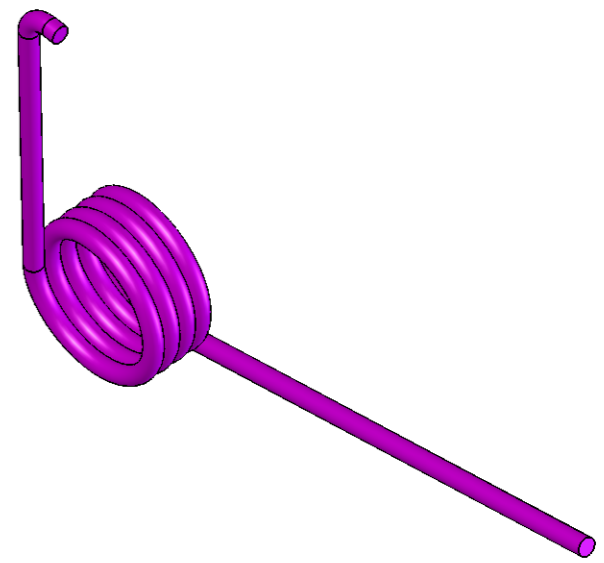
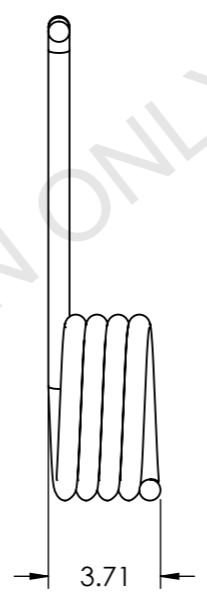
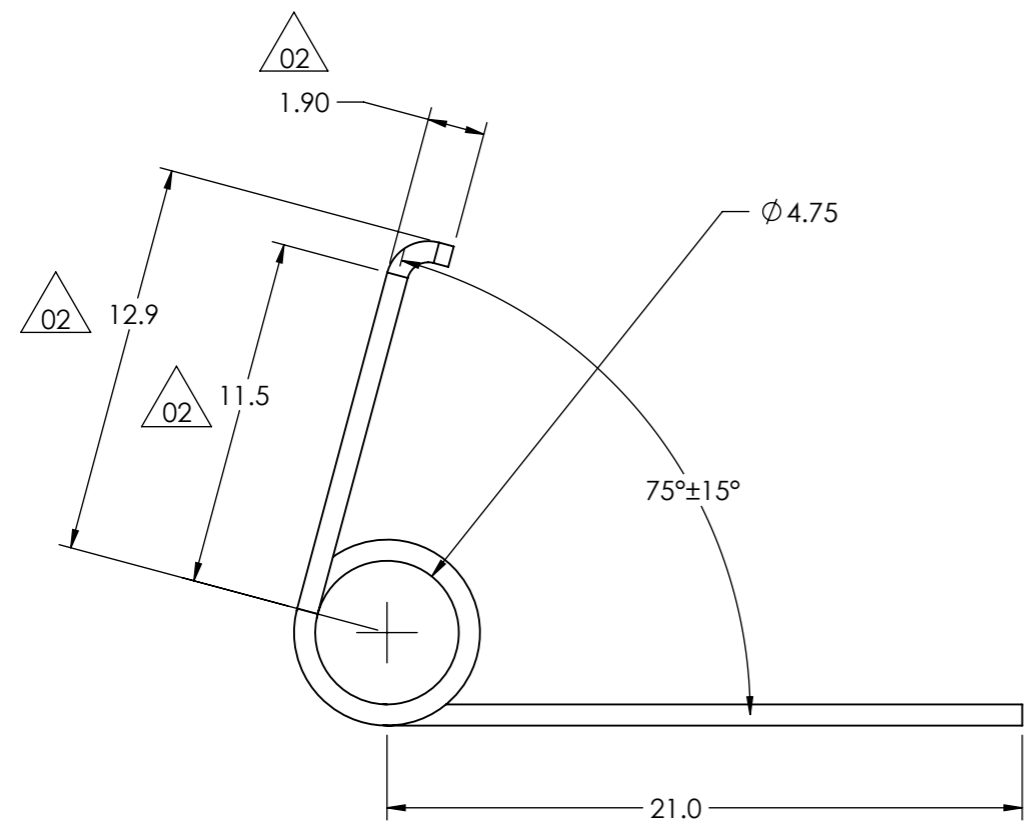


REVISIONS

REV.	ECO NO.	BRADY Y NUMBER	DESCRIPTION OF CHANGE	REVISED BY	APPROVED BY	DATE
00	37839			BANDHOBR		
01	37839		CHANGE LEG LENGTHS	BANDHOBR		
02	37839	Y4822242	ADDED LEG BEND	BANDHOBR		



NOTES:

1. RAW MATERIAL: ROHS COMPLIANT PRE-ZINC PLATED MUSIC WIRE.
2. WIRE DIAMETER: 0.70 +/- 0.0076
3. NUMBER OF COILS: 4.2917 COILS REF
4. LEFT HAND WOUND
5. CLOSE WOUND
6. DIMENSIONS WHICH ARE ENCAPSULATED OR DESIGNATED AS "CTQ" (CRITICAL TO QUALITY) ARE CRITICAL CHARACTERISTICS PER THE BRADY SUPPLIER MANUAL.
7. COMPONENT MATERIALS NEED TO COMPLY WITH WITH ROHS, REACH, AND OTHER APPLICABLE REGULATIONS PER BRADY SYSTEMS SPECIFICATION #SP00481/Y453647.
8. REFERENCE BRADY PACKAGING AND CLEANLINESS SPECIFICATION SP00322/Y1321.

FOR QUOTATION ONLY

ENG. SPECIFICATIONS EXCEPT AS NOTED: DIMENSIONS ARE IN ACCORDANCE WITH ASME Y14.5Y-1994 INTERPRET DRAWING IN ACCORDANCE WITH ASME Y14.100 UNLESS OTHERWISE SPECIFIED DIMENSIONS ARE IN MILLIMETERS DECIMALS: X. = ± 0.5 .X = ± 0.25 .XX = ± 0.13 ANGLES: = ± 0°30' STANDARD MACHINING $\nabla^{3.2}$		DWG BY BANDHOBR DATE 02/09/2018		PROJECT FUSION	SCALE 4:1	P.O. Box 2131 Milwaukee, Wisconsin 53201 Phone (414) 358-6600			
		CHKD BY DATE							
THIRD ANGLE PROJECTION DO NOT SCALE		FINISH SEE NOTES		SIZE A3	MODEL REV 04	STATUS EX			
DWG TITLE SPRING, TORSION, SLIDER, LH				SHEET 1 OF 1	DWG NO JNR40316		REV 02		
THE INFORMATION CONTAINED IN THIS DOCUMENT IS CONFIDENTIAL AND THE SOLE PROPERTY OF BRADY CORP. AND MAY NOT BE USED OR REPRODUCED WITHOUT THE WRITTEN PERMISSION OF BRADY CORP.									