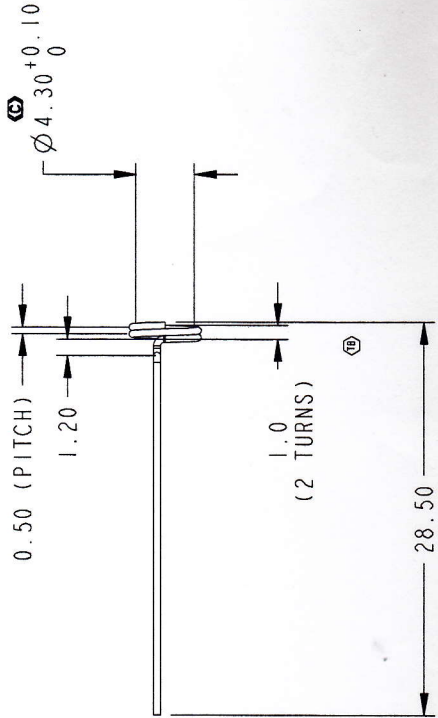
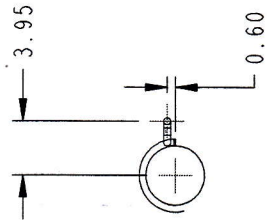


FOR REFERENCE ONLY IF PRINTED  
 CAD DATABASE FILENAME: OUTER-SPRING

REV.	DESCRIPTION	DATE	ECO NO.	BY.
TA	PRE-RELEASED	29 MARCH 12	NA	BONG



- NOTES:
- MATERIAL :  $\varnothing$ 0.5mm MUSIC WIRE
  - PLATING: COPPER CLAD
  - THICKNESS: 6 TO 12 MICRON
  - ALL DIMENSIONS ARE IN MILLIMETERS
  - CAD CONTROLLED GEOMETRY
  - MAX BURR 0.05MM NO LOOSE BURRS PERMITTED
  - PARTS SHALL BE FREE OF LOOSE BURRS, OILS AND DEBRIS
  - NO CHANGE IN MATERIAL AND SHEET THICKNESS IS ALLOWED WITHOUT PRIOR WRITTEN APPROVAL BY EMITS TECHNOLOGY.
  - DO NOT SCALE DRAWING
  - PARTS SHALL BE PACKAGED IN A MANNER TO PREVENT BOWING, SCRATCHING OR DAMAGE DURING SHIPMENT (FOR EXAMPLE USE TRAY).
  - DIMENSIONS TO THEORETICAL INTERSECTION (TTI).
  - ALL MATERIALS, PLATING AND PROCESSES USED TO FABRICATE THE COMPONENT SPECIFIED ON THIS DOCUMENT MUST COMPLY WITH THE ROHS DIRECTIVE 2002/95EC AND GP SS-00259 REQUIREMENTS.

ITEM NO.	QTY.	PART NUMBER	DESCRIPTION	MATERIAL
TOLERANCES (UNLESS SPECIFIED): X.X ±0.1 X.XX ±0.05 X.XXX ±0.025 CONCENTRICITY ±0.05 PERPENDICULARITY ±0.05 FLATNESS ±0.05 BREAK ALL CORNERS R0.25 MAX (ST) INDICATES SSC REQUIRED GP ±1.5 REQUIRES CORRECTIVE ACTION DIMENSIONING AND TOLERANCING PER ASME Y14.5M-1994				
METRIC UNITS = mm		EMITS PROPRIETARY - THE DRAWING ON THIS PRINT AND INFORMATION THEREON ARE PROPRIETARY TO EMITS, AND SHALL NOT BE DISSEMINATED IN WHOLE OR IN PART WITHOUT EMITS CONSENT.		
MATERIAL: SEE NOTES		<b>emits Technology Sdn. Bhd.</b>		
DRAWN: KY Ho		No.2, Lorong Bahlu, Tam Isdarstri Bahlu, Mat Mendin 13400 Butterworth, Penang, Malaysia.		
CHECKED: KY Ho		FINISH: SEE NOTES		A4 SIZE
APPROVED: BL Loy		OUTER SPRING, HYT COVERT UHF		PAGE: 1 OF 1
SCALE: 2.000		REV. TA	PART NUMBER: R-P0044-24-MTD-13	

PROJECT DATABASE LOCATION:

27/10/12