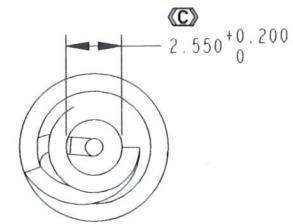
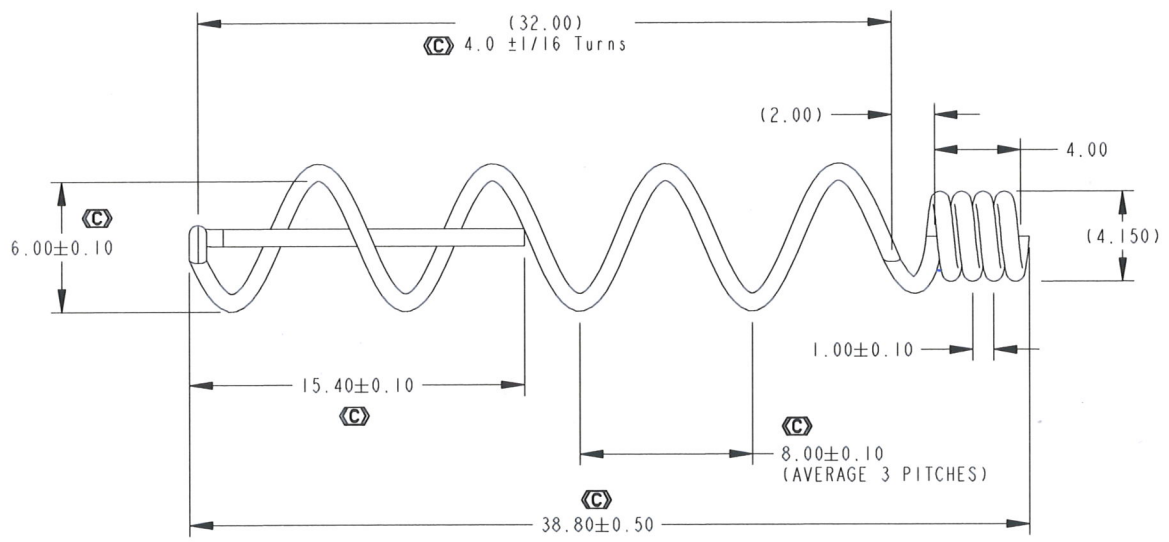


FOR REFERENCE ONLY IF PRINTED DRAWING STATUS:
 CAD DATABASE FILENAME: INNER_SRPING_800MHZ_G2

REV.	DESCRIPTION.	DATE.	ECO NO.	BY.
A	Released for Production.	31-Oct-19	N/A	KY Ho



SCALE 3.000

CONTROLLED COPY
DATE: 31-OCT-19

NOTES:

- MATERIAL : $\varnothing 0.8\text{mm}$ MUSIC WIRE
- PLATING: COPPER PLATE C
THICKNESS: 6 TO 12 MICRON
- ALL DIMENSIONS ARE IN MILLIMETERS
- CAD CONTROLLED GEOMETRY
- MAX BURR 0.05MM, NO LOOSE BURRS PERMITTED
- PARTS SHALL BE FREE OF LOOSE BURRS, OILS AND DEBRIS.
- NO CHANGE IN MATERIAL AND SHEET THICKNESS IS ALLOWED WITHOUT PRIOR WRITTEN APPROVAL BY EMITS TECHNOLOGY.
- DO NOT SCALE DRAWING.
- PARTS SHALL BE PACKAGED IN A MANNER TO PREVENT BOWING, SCRATCHING OR DAMAGE DURING SHIPMENT (FOR EXAMPLE USE TRAY).
- DIMENSIONS TO THEORETICAL INTERSECTION (TTI).
- ALL MATERIALS, PLATING AND PROCESSES USED TO FABRICATE THE COMPONENT SPECIFIED ON THIS DOCUMENT MUST COMPLY WITH THE RoHS DIRECTIVE 2002/95EC AND GP SS-00259 REQUIREMENTS.

ITEM NO.	QTY.	PART NUMBER	DESCRIPTION	MATERIAL	
TOLERANCES (UNLESS SPECIFIED): X.X ± 0.1 X.XX ± 0.05 ANGLES $\pm 1^\circ$ CONCENTRICITY ± 0.05 PERPENDICULARITY ± 0.05 FLATNESS ± 0.05 BREAK ALL CORNERS R0.25 MAX C INDICATES CRITICAL DIMENSION ST INDICATES SPC REQUIRED Cpk < 1.5 REQUIRES CORRECTIVE ACTION DIMENSIONING AND TOLERANCING PER ASME Y14.5M-1994					
EMITS PROPRIETARY - THE DRAWING ON THIS PRINT AND INFORMATION THEREWITH ARE PROPRIETARY TO EMITS, AND SHALL NOT TO BE DISCUSS IN WHOLE OR IN PART WITHOUT EMITS CONCENT.					
METRIC UNITS = mm 			MATERIAL: SEE NOTES		
DRAWN: KY Ho CHECKED: KY Ho APPROVED: BL Loy			FINISH: SEE NOTES		
Emits Technology Sdn. Bhd. Plot 24 hilir Sungai Keluang 3, Fasa 4, Bayan Lepas Free Industrial Zone, 11900 Penang, Malaysia.				A4 SIZE	
Inner Spring 800 ~ 870Mhz, PT350 UHF 9cm		SCALE: 1.000	REV: A	PART NUMBER: SPR301809220	PAGE: 1 OF 1

PROJECT DATABASE LOCATION: