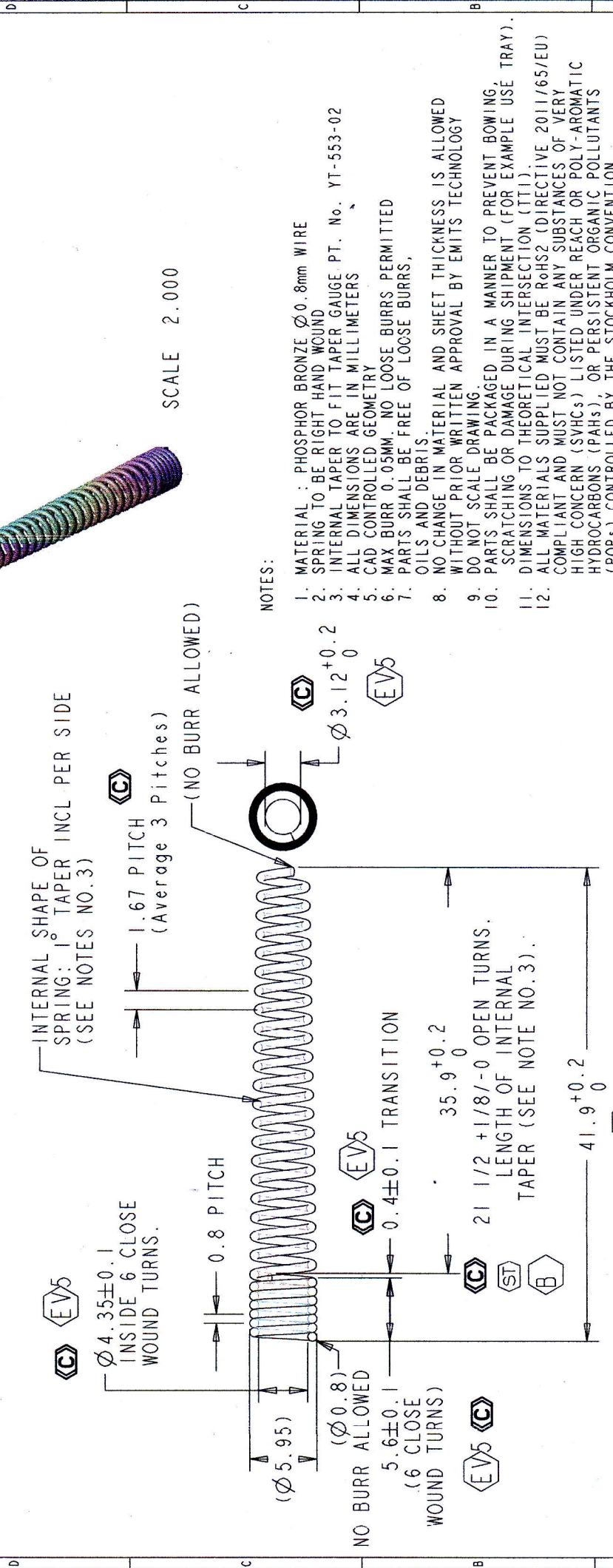


FOR REFERENCE ONLY IF PRINTED		DRAWING STATUS:	
CAD DATABASE FILENAME:			
REV	DESCRIPTION	DATE	BY
A	RELEASE TO PRODUCTION. CHANGE TOLERANCE TO 21 1/4 +1/8/-0, 35.49±0.57-0 AND 38.89±0.57-0	12-SEP-19	ZUL
EV 5	CHANGE NOTE TO 21 1/2 +1/8/-0 TURNS, DIM 35.9±0.2/-0, 5.6±0.1 AND 41.9±0.2/-0	14-NOV-19	ZUL



ITEM NO.	QTY.	PART NUMBER	DESCRIPTION

EMITS PROPRIETARY - THE DRAWING ON THIS PRINT AND INFORMATION THEREWITH ARE PROPRIETARY TO EMITS, AND SHALL NOT BE DISCUSSED IN WHOLE OR IN PART WITHOUT EMITS CONSENT.

MATERIAL: PHOSPHOR BRONZE
0.8mm WIRE

FINISH: SEE NOTES

QUALITY PURCH

SCALE: 3.000 REV. EV5 DRAWING NUMBER: SPR301904326

emits Technology Sdn. Bhd.
Pusat 24 Kilir Sungai Heieng 3, Fasa 4, Bayan Lepas Free Industrial Zone, 11900 Praang

IN389 ANTENNA HELIX, SPRING ELEMENT

SCALE: 3.000 REV. EV5 DRAWING NUMBER: SPR301904326

PROJECT CODE: MX-11389 PART NUMBER: SPR301904326 NEXT ASSEMBLY: USED ON

UNLESS OTHERWISE SPECIFIED TOLERANCES: ±0.2
X.XX ±0.1
X.XXX ±0.05
BREAK ALL CORNERS RT.1 MAX.
C INDICATES CRITICAL DIMENSION
CSP & I.S. REQUIRES CORRECTIVE ACTION
DIMENSIONING AND TOLERANCING PER ASME Y.4.5M-1994

NOTES:

1. MATERIAL : PHOSPHOR BRONZE ϕ 0.8mm WIRE
2. SPRING TO BE RIGHT HAND WOUND
3. INTERNAL TAPER TO FIT TAPER GAUGE PT. No. YT-553-02
4. ALL DIMENSIONS ARE IN MILLIMETERS
5. CAD CONTROLLED GEOMETRY
6. MAX BURR 0.05MM, NO LOOSE BURRS PERMITTED
7. PARTS SHALL BE FREE OF LOOSE BURRS, OILS AND DEBRIS.
8. NO CHANGE IN MATERIAL AND SHEET THICKNESS IS ALLOWED WITHOUT PRIOR WRITTEN APPROVAL BY EMITS TECHNOLOGY
9. DO NOT SCALE DRAWING.
10. PARTS SHALL BE PACKAGED IN A MANNER TO PREVENT BOWING, SCRATCHING OR DAMAGE DURING SHIPMENT (FOR EXAMPLE USE TRAY). DIMENSIONS TO THEORETICAL INTERSECTION (TTI).
11. ALL MATERIALS SUPPLIED MUST BE RoHS2 (DIRECTIVE 2011/65/EU) COMPLIANT AND MUST NOT CONTAIN ANY SUBSTANCES OF VERY HIGH CONCERN (SVHCs) LISTED UNDER REACH OR POLY-AROMATIC HYDROCARBONS (PAHs), OR PERSISTENT ORGANIC POLLUTANTS (POPs) CONTROLLED BY THE STOCKHOLM CONVENTION.