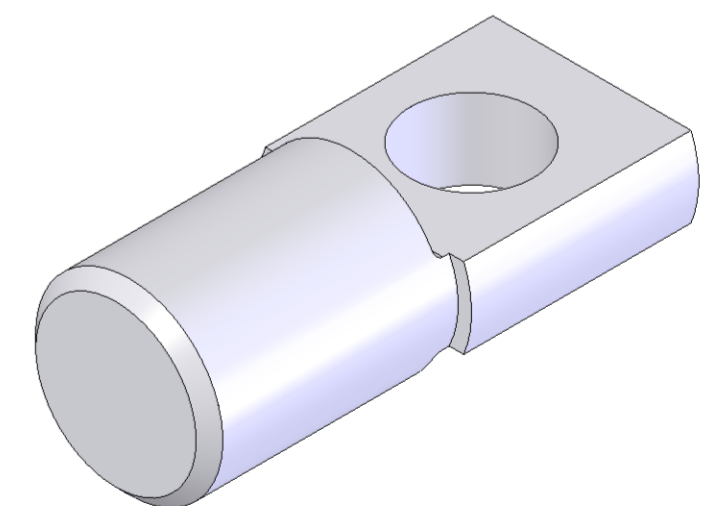
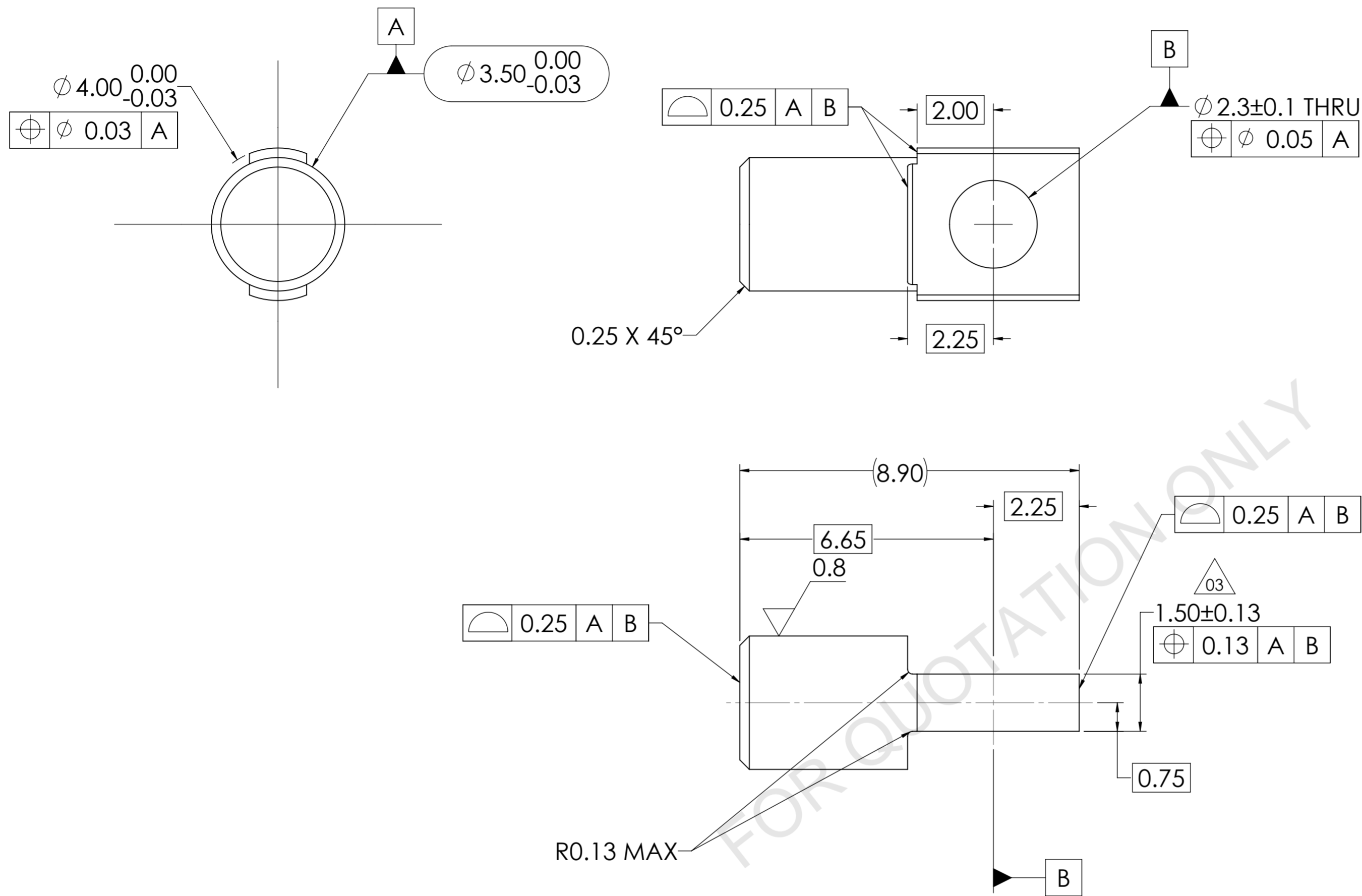


| REVISIONS | | | | | | |
|-----------|---------|----------------|--|------------|-------------|------|
| REV. | ECO NO. | BRADY Y NUMBER | DESCRIPTION OF CHANGE | REVISED BY | APPROVED BY | DATE |
| 01 | 37839 | Y4660405 | MATERIAL CHANGE | GLADKOGE | | |
| 02 | 37839 | Y4660405 | FLATTENED SCREW FACE TO INCREASE THREAD ENGAGEMENT | TORGERNI | | |
| 03 | 37839 | Y4660405 | CHANGE TO FLATTENED PIN TOLERANCE | TORGERNI | | |



NOTES:

1. DIMENSIONS WHICH ARE ENCAPSULATED OR DESIGNATED AS "CTQ" (CRITICAL TO QUALITY) ARE CRITICAL CHARACTERISTICS PER THE BRADY SUPPLIER MANUAL
2. MATERIAL: SUS 303 STAINLESS STEEL
3. FINISH: ELECTROLESS NICKEL PLATED (0.0025mm - 0.0076mm THICK REF)
4. PART TO BE FREE OF EXTERNAL BLEMISHES UNLESS APPROVED BY BRADY ENGINEERING.
5. CORNER BREAK/DEBURR ALL EXTERNAL EDGES UNLESS OTHERWISE SPECIFIED.
6. PART TO BE FREE OF OIL AND DIRT.
7. REFERENCE BRADY DOCUMENT SP00322/Y1321 FOR PACKAGING AND CLEANLINESS REQUIREMENTS.
8. COMPONENT MATERIALS NEED TO COMPLY WITH RoHS, REACH, AND OTHER APPLICABLE REGULATIONS PER BRADY SYSTEMS SPECIFICATION SP00481/Y453647.
9. ALL DIMENSIONS ARE AFTER PLATING.

| ENG. SPECIFICATIONS EXCEPT AS NOTED: | | DWG BY | GLADKOGE | PROJECT | SCALE | P.O. Box 2131 Milwaukee, Wisconsin 53201 Phone (414) 358-6600 | |
|---|--|-----------|------------|-------------------------------|-------|---|-----------|
| DIMENSIONS ARE IN ACCORDANCE WITH ASME Y14.5Y-1994 INTERPRET DRAWING IN ACCORDANCE WITH ASME Y14.100 UNLESS OTHERWISE SPECIFIED DIMENSIONS ARE IN MILLIMETERS | | DATE | 06/05/2018 | JUNIOR | 10:1 | BRADY | |
| DECIMALS: X = ± 0.5 XX = ± 0.25 XXX = ± 0.13 ANGLES: ± 0°30' | | CHKD BY | | | | SIZE A2 | MODEL REV |
| STANDARD MACHINING ∇ 3.2 | | DATE | | | | 01 | STATUS EX |
| THIRD ANGLE PROJECTION DO NOT SCALE | | MATERIAL | | SEE NOTES | | SHEET | DWG NO |
| THE INFORMATION CONTAINED IN THIS DOCUMENT IS CONFIDENTIAL AND THE SOLE PROPERTY OF BRADY CORP. AND MAY NOT BE USED OR REPRODUCED WITHOUT THE WRITTEN PERMISSION OF BRADY CORP. | | FINISH | | SEE NOTES | | 1 OF 1 | JNR40345 |
| | | DWG TITLE | | PIN, TENSION PLATE, BACK, JNR | | REV | 03 |