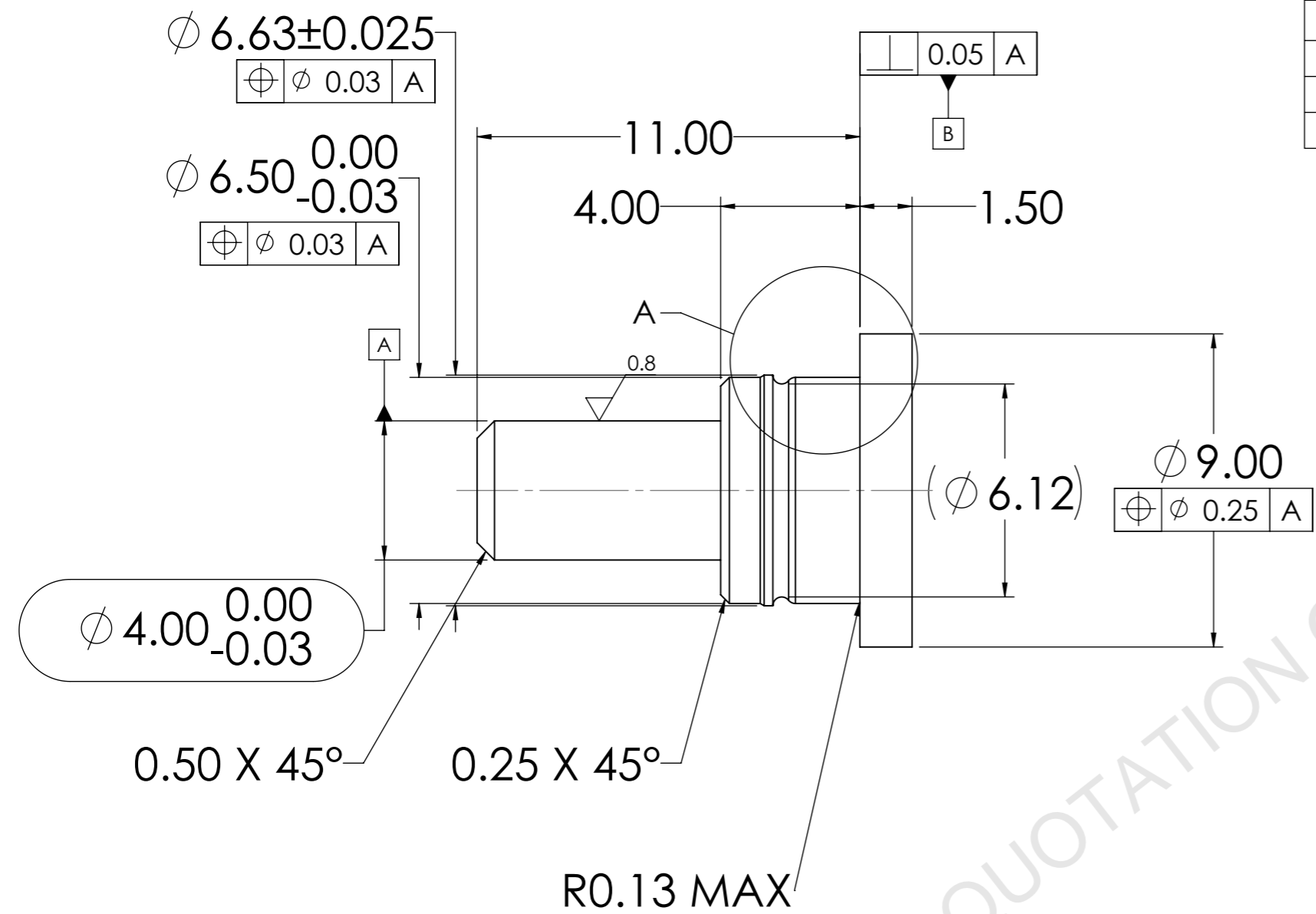
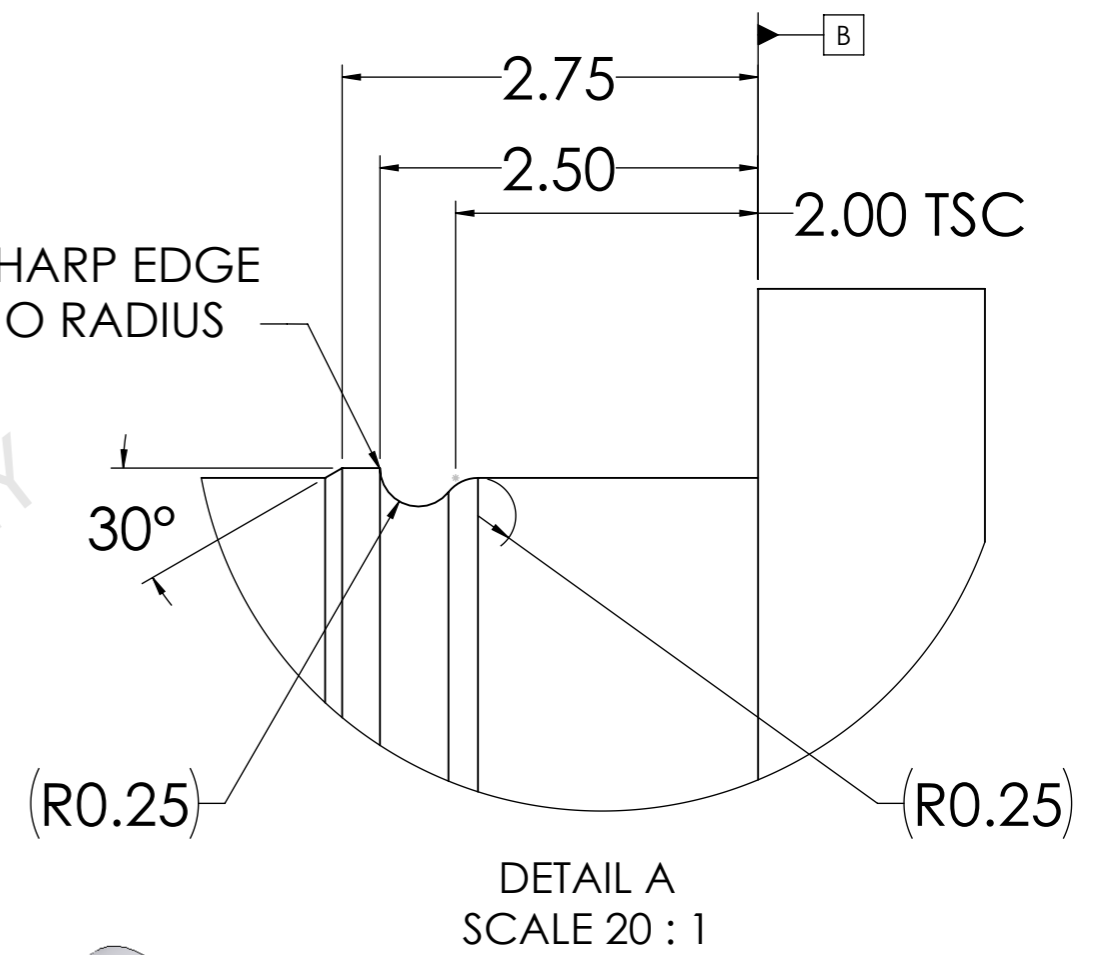


REVISIONS

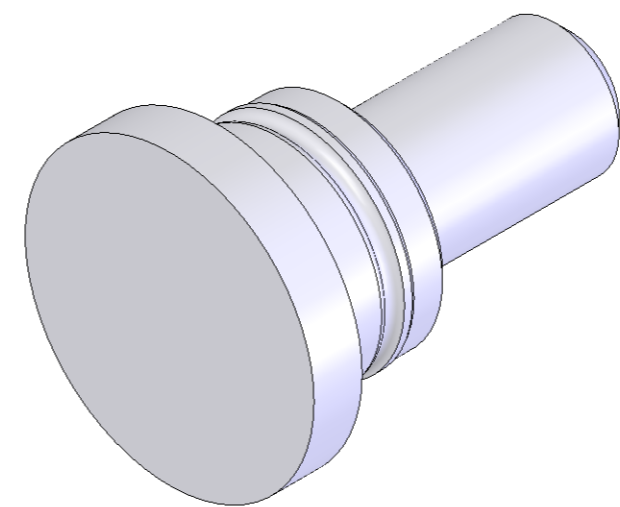
| REV. | ECO NO. | BRADY Y NUMBER | DESCRIPTION OF CHANGE | REVISED BY | APPROVED BY | DATE |
|------|---------|----------------|-----------------------|------------|-------------|------------|
| 00 | 37839 | Y4662889 | NEW RELEASE | GLADKOGE | | |
| 01 | 37839 | Y4662889 | MATERIAL CHANGE | GLADKOGE | | |
| 02 | | Y4662889 | EM2 CHANGES | CHERNEKA | CHERNEKA | 02/04/2019 |



SHARP EDGE
NO RADIUS



DETAIL A
SCALE 20 : 1



NOTES:

1. DIMENSIONS WHICH ARE ENCAPSULATED OR DESIGNATED AS "CTQ" (CRITICAL TO QUALITY) ARE CRITICAL CHARACTERISTICS PER THE BRADY SUPPLIER MANUAL.
2. MATERIAL: SUS 303 STAINLESS STEEL
3. FINISH: ELECTROLESS NICKEL PLATED (0.0025mm - 0.0076mm THICK REF)
4. PART TO BE FREE OF EXTERNAL BLEMISHES UNLESS APPROVED BY BRADY ENGINEERING.
5. CORNER BREAK/DEBURR ALL EXTERNAL EDGES UNLESS OTHERWISE SPECIFIED.
6. PART TO BE FREE OF OIL AND DIRT.
7. REFERENCE BRADY DOCUMENT SP00322/Y1321 FOR PACKAGING AND CLEANLINESS REQUIREMENTS.
8. COMPONENT MATERIALS NEED TO COMPLY WITH ROHS, REACH, AND OTHER APPLICABLE REGULATIONS PER BRADY SYSTEMS SPECIFICATION SP00481/Y453647.
9. ALL DIMENSIONS AFTER PLATING

| | | | | | | | | | | | | |
|--|--|---|------------|-----------|--------|-------------------------|-----|---|----------|--|-----|---------|
| ENG. SPECIFICATIONS EXCEPT AS NOTED: | | DWG BY | GLADKOGE | PROJECT | JUNIOR | SCALE | 6:1 | P.O. Box 2131 Milwaukee, Wisconsin 53201 Phone (414) 358-6600 | | | | |
| DIMENSIONS ARE IN ACCORDANCE WITH ASME Y14.5Y-1994 INTERPRET DRAWING IN ACCORDANCE WITH ASME Y14.100 | | DATE | 06/13/2018 | | | | | | | | | |
| UNLESS OTHERWISE SPECIFIED DIMENSIONS ARE IN MILLIMETERS | | CHKD BY | | MATERIAL | | SEE NOTES | | | | | | SIZE A3 |
| DECIMALS: X = ± 0.5 -X = ± 0.25 XX = ± 0.13 ANGLES: = ± 0°30' | | DATE | | FINISH | | SEE NOTES | | SHEET | DWG NO | | REV | |
| STANDARD MACHINING 3.2/√ | | THIRD ANGLE PROJECTION | | DWG TITLE | | PIN, IDLER, PEELER, JNR | | 1 OF 1 | JNR40201 | | 02 | |
| DO NOT SCALE | | THE INFORMATION CONTAINED IN THIS DOCUMENT IS CONFIDENTIAL AND THE SOLE PROPERTY OF BRADY CORP. AND MAY NOT BE USED OR REPRODUCED WITHOUT THE WRITTEN PERMISSION OF BRADY CORP. | | | | | | | | | | |

DRAWING DIR:0000000000000000000000041666 REVISION:02