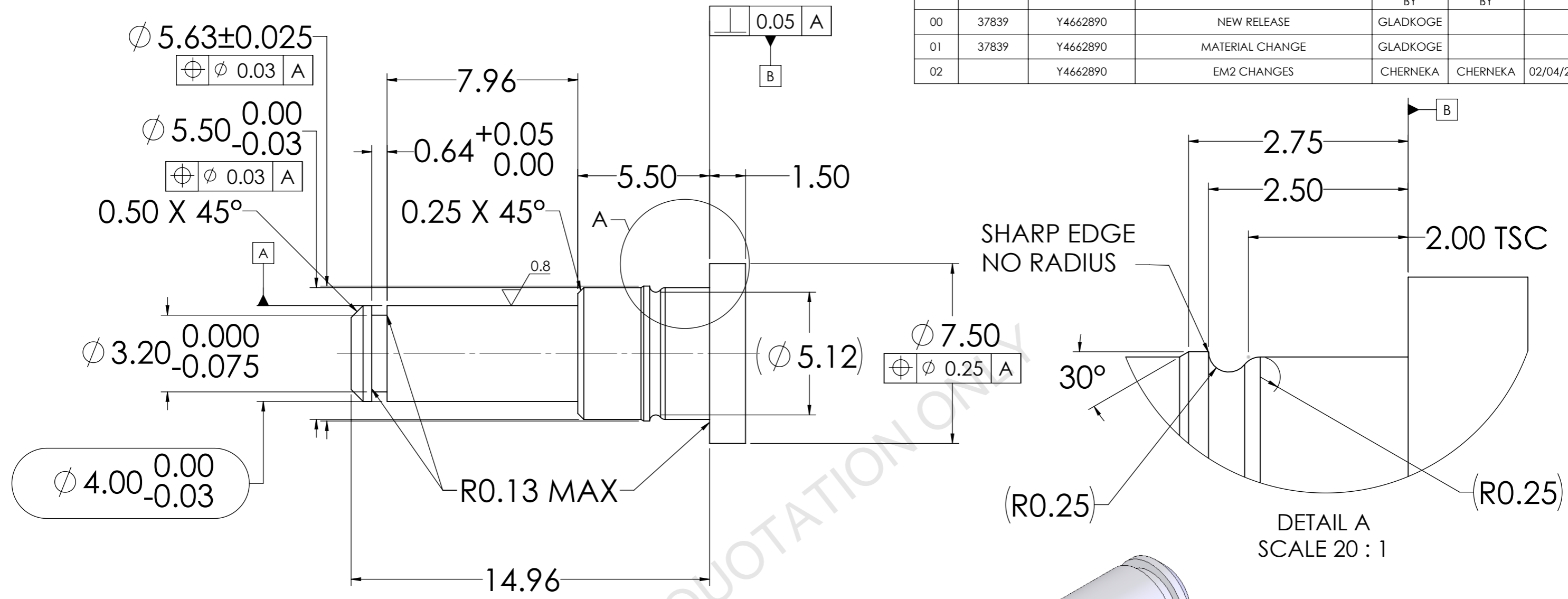


REVISIONS

REV.	ECO NO.	BRADY Y NUMBER	DESCRIPTION OF CHANGE	REVISED BY	APPROVED BY	DATE
00	37839	Y4662890	NEW RELEASE	GLADKOGE		
01	37839	Y4662890	MATERIAL CHANGE	GLADKOGE		
02		Y4662890	EM2 CHANGES	CHERNEKA	CHERNEKA	02/04/2019



NOTES:

1. DIMENSIONS WHICH ARE ENCAPSULATED OR DESIGNATED AS "CTQ" (CRITICAL TO QUALITY) ARE CRITICAL CHARACTERISTICS PER THE BRADY SUPPLIER MANUAL.
2. MATERIAL: SUS 303 STAINLESS STEEL
3. FINISH: ELECTROLESS NICKEL PLATED (0.0025mm - 0.0076mm THICK REF)
4. PART TO BE FREE OF EXTERNAL BLEMISHES UNLESS APPROVED BY BRADY ENGINEERING.
5. CORNER BREAK/DEBURR ALL EXTERNAL EDGES UNLESS OTHERWISE SPECIFIED.
6. PART TO BE FREE OF OIL AND DIRT.
7. REFERENCE BRADY DOCUMENT SP00322/Y1321 FOR PACKAGING AND CLEANLINESS REQUIREMENTS.
8. COMPONENT MATERIALS NEED TO COMPLY WITH RoHS, REACH, AND OTHER APPLICABLE REGULATIONS PER BRADY SYSTEMS SPECIFICATION SP00481/Y453647.
9. ALL DIMENSIONS ARE AFTER PLATING.

ENG. SPECIFICATIONS EXCEPT AS NOTED:

DIMENSIONS ARE IN ACCORDANCE WITH ASME Y14.5Y-1994 INTERPRET DRAWING IN ACCORDANCE WITH ASME Y14.100

UNLESS OTHERWISE SPECIFIED DIMENSIONS ARE IN MILLIMETERS

DECIMALS: X = ± 0.5
 .X = ± 0.25
 .XX = ± 0.13
 ANGLES: = ± 0°30'

STANDARD MACHINING 3.2/√

THIRD ANGLE PROJECTION

DO NOT SCALE

THE INFORMATION CONTAINED IN THIS DOCUMENT IS CONFIDENTIAL AND THE SOLE PROPERTY OF BRADY CORP. AND MAY NOT BE USED OR REPRODUCED WITHOUT THE WRITTEN PERMISSION OF BRADY CORP.

DWG BY GLADKOGE	PROJECT JUNIOR	SCALE 6:1	P.O. Box 2131 Milwaukee, Wisconsin 53201 Phone (414) 358-6600		
DATE 06/13/2018			BRADY®		
CHKD BY	MATERIAL SEE NOTES		SIZE A3	MODEL REV 01	STATUS EX
DATE	FINISH SEE NOTES		SHEET 1 OF 1	DWG NO JNR40198	REV 02
DWG TITLE PIN, COMPOUND GEAR, PEELER, JNR					

DRAWING DIR:0000000000000000000000041667 REVISION:02