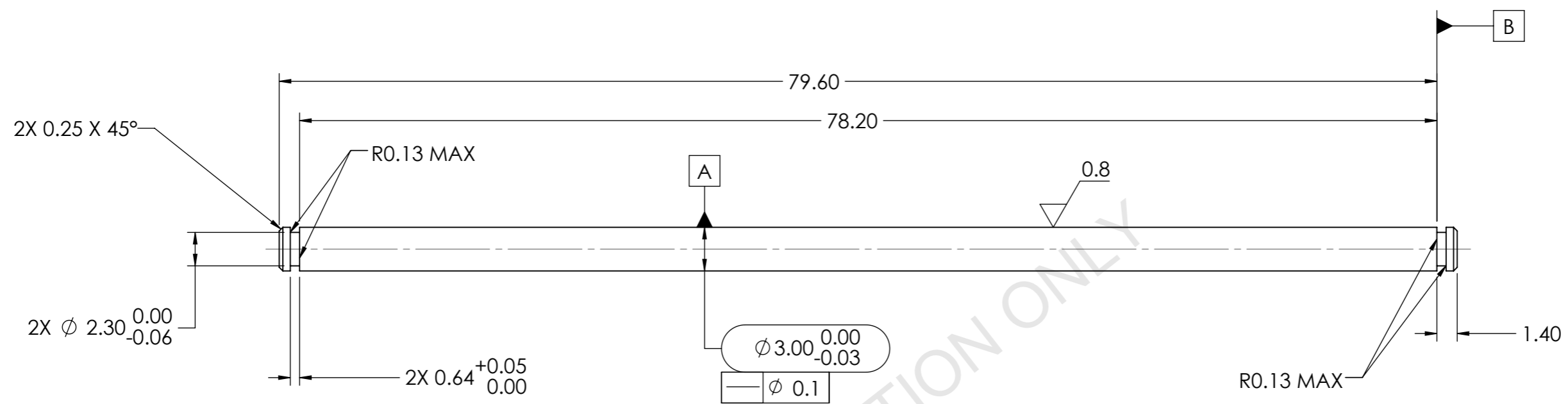


REVISIONS

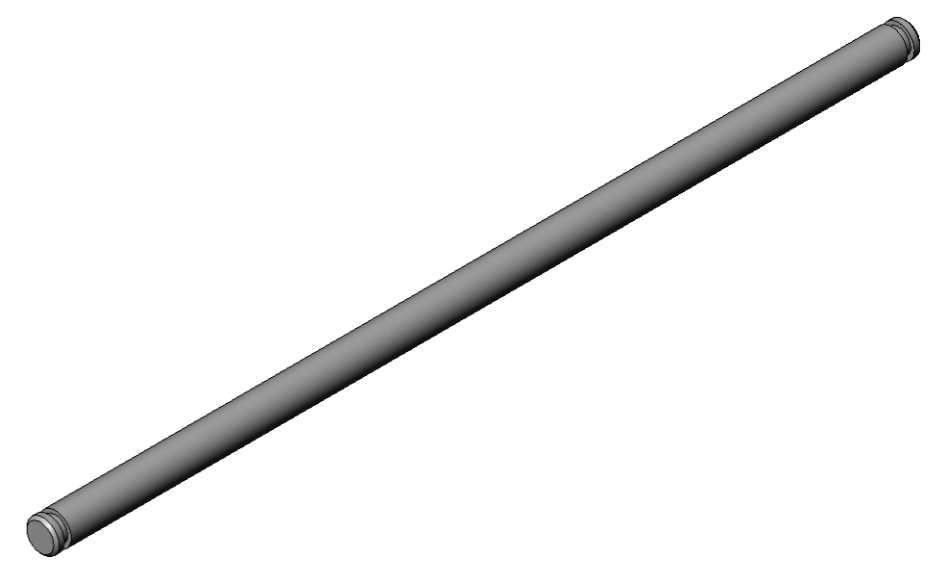
REV.	ECO NO.	BRADY Y NUMBER	DESCRIPTION OF CHANGE	REVISED BY	APPROVED BY	DATE
01	37839	Y4662891	MATERIAL CHANGE	GLADKOGE		
02	37839	Y4662891	CHANGED NOTES & DIMS	BANDHOBR		
03		Y4662891	REDUCED LENGTH FOR EASIER ASSEMBLY	CHERNEKA		



NOTES:

1. DIMENSIONS WHICH ARE ENCAPSULATED OR DESIGNATED AS 1. "CTQ" (CRITICAL TO QUALITY) ARE CRITICAL CHARACTERISTICS PER THE BRADY SUPPLIER MANUAL.
2. MATERIAL: SUS 303 STAINLESS STEEL.
3. FINISH: ELECTROLESS NICKEL PLATED (0.0025mm - 0.0076mm THICK REF)
4. PART TO BE FREE OF EXTERNAL BLEMISHES UNLESS APPROVED BY BRADY ENGINEERING.
5. CORNER BREAK/DEBURR ALL EXTERNAL EDGES UNLESS OTHERWISE SPECIFIED.
6. PART TO BE FREE OF OIL AND DIRT.
7. REFERENCE BRADY DOCUMENT SP00322/Y1321 FOR PACKAGING AND CLEANLINESS REQUIREMENTS.
8. COMPONENT MATERIALS NEED TO COMPLY WITH RoHS, REACH, 8. AND OTHER APPLICABLE REGULATIONS PER BRADY SYSTEMS SPECIFICATION SP00481/Y453647.
9. ALL DIMENSIONS ARE AFTER PLATING.

FOR QUOTATION ONLY



ENG. SPECIFICATIONS EXCEPT AS NOTED:		DWG BY	GLADKOGE	PROJECT	SCALE	P.O. Box 2131 Milwaukee, Wisconsin 53201 Phone (414) 358-6600				
DIMENSIONS ARE IN ACCORDANCE WITH ASME Y14.5Y-1994 INTERPRET DRAWING IN ACCORDANCE WITH ASME Y14.100 UNLESS OTHERWISE SPECIFIED DIMENSIONS ARE IN MILLIMETERS DECIMALS: X. = ± 0.5 .X = ± 0.25 .XX = ± 0.13 ANGLES: = ± 0°30'		DATE	06/13/2018							JUNIOR
STANDARD MACHINING $\nabla^{3.2}$ THIRD ANGLE PROJECTION DO NOT SCALE		CHKD BY		MATERIAL	SEE NOTES	SIZE A3	MODEL REV	03	STATUS	
THE INFORMATION CONTAINED IN THIS DOCUMENT IS CONFIDENTIAL AND THE SOLE PROPERTY OF BRADY CORP. AND MAY NOT BE USED OR REPRODUCED WITHOUT THE WRITTEN PERMISSION OF BRADY CORP.		DATE		FINISH	SEE NOTES	SHEET	DWG NO		REV	
				SHAFT, PEELER DOOR PIVOT, JNR		1 OF 1	JNR40230		03	